

Cotterman[®]

Workmaster[®]

SUPER DUTY

ROLLING METAL LADDER

For the workspace that demands the toughest ladder, Cotterman introduces the Super Duty Workmaster ladder.



Cotterman Co.

Division of Material Control, Inc.
www.cotterman.com

Cotterman[®]

Workmaster[®]

Every day work is done where equipment needs to be able to take a beating and keep working. For the toughest jobs, Cotterman introduces the Super Duty Workmaster ladder. Built with extra heavy duty components, this ladder is resistant to all the dings and bumps in harsh work environments.

The Workmaster is also customizable with an array of features and options to adapt the ladder to specific work areas.

Essentially the Workmaster Super Duty Ladder can become a mobile assembly or repair shop for anything out of reach.

Two tone powder coat finish creates high visibility and can be order in an array of different colors.

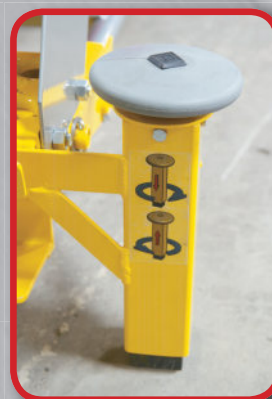
For the toughest work areas, step up to the Cotterman Workmaster Super Duty.



**OPTIONAL
TOOL PEGBOARD**



**MODULAR FRONT LEG AND SAFELOCK FIELD
REPLACEABLE, ADJUSTABLE FRONT LEGS
LEVEL THE LADDER**



**OPTIONAL
UTILITY TRAY
150 lb. CAPACITY**



**1.5" TUBE
HANDRAILS
POWDER COATED**

**HEAVY DUTY
CASTERS,
CURVED BASE
AND BACK
PANEL AND
BOLT LOCATION
FOR EASY
ASSEMBLY**





**STANDARD
BACK TOOL BOARD**

SUPERIOR CONSTRUCTION

- 1000 pound capacity allows for tool cabinet and/or tool pegboard
- 1 1/2" diameter x 14 gage tube construction
- 7" x 10 gage Stair Stringer
- Contoured back and base panel assembly to allow unobstructed access to equipment and reduce possibility of impact damage
- 1 1/2" x 14 gage steel tube base and back panel, bolt on for ease of replacement



**24" x 24"
PLATFORM
WITH OPTIONAL
SELF-CLOSING GATES,
FULLY ENCLOSE PERSONNEL.
TOEBOARDS AND 42" GUARDRAILS STANDARD**



**OPTIONAL
TOOL BOX**



**OPTIONAL
FRONT
SELF-CLOSING
GATE**



**OPTIONAL
REAR
SELF-CLOSING
GATE**

SPECIFICATIONS & DIMENSIONS

Mfr. Model No.	Steps	Tread Type	Platform Height	Overall Height	Step Width (In)	Base Width (In)	Base Length (In)	Load Capacity (lbs)	Wt (lbs)
WMX05R37A3P3	5	Grip Strut	4' 2"	7' 8"	24	37	56	1,000	297
WMX06R37A3P3	6	Grip Strut	5'	8' 6"	24	37	62	1,000	314
WMX07R37A3P3	7	Grip Strut	5' 10"	9' 4"	24	37	68	1,000	343
WMX08R37A3P3	8	Grip Strut	6' 8"	10' 2"	24	37	74	1,000	360
WMX09R37A3P3	9	Grip Strut	7' 6"	11'	24	37	80	1,000	380
WMX10R37A3P3	10	Grip Strut	8' 4"	11' 10"	24	37	86	1,000	397
WMX11R37A3P3	11	Grip Strut	9' 2"	12' 8"	24	37	92	1,000	423
WMX12R37A3P3	12	Grip Strut	10'	13' 6"	24	37	98	1,000	440
WMX05R37A9P3	5	Open Grip	4' 2"	7' 8"	24	37	56	1,000	301
WMX06R37A9P3	6	Open Grip	5'	8' 6"	24	37	62	1,000	318
WMX07R37A9P3	7	Open Grip	5' 10"	9' 4"	24	37	68	1,000	347
WMX08R37A9P3	8	Open Grip	6' 8"	10' 2"	24	37	74	1,000	364
WMX09R37A9P3	9	Open Grip	7' 6"	11'	24	37	80	1,000	384
WMX10R37A9P3	10	Open Grip	8' 4"	11' 10"	24	37	86	1,000	401
WMX11R37A9P3	11	Open Grip	9' 2"	12' 8"	24	37	92	1,000	427
WMX12R37A9P3	12	Open Grip	10'	13' 6"	24	37	98	1,000	444

AVAILABLE OPTIONS

- Platform safety gate (factory or field installed) available for all 4 sides of platform
- Accessory platform can accommodate numerous options including: Tool cabinet, Peg board panel, Bin/shelving unit, 24" x 24" Utility tray with 150 lb. capacity



Cotterman®
www.cotterman.com • info@cotterman.com



FOR MORE INFORMATION
ON THE WORKMASTER,
SCAN CODE WITH YOUR
SMARTPHONE.

S100D
9/16/14

Cotterman®



**STEP
STANDS
and STOOLS**



**500 lb load rating
One, two and three step models
Available in steel or aluminum**

STEEL STEP STANDS

Product Features:

- 45 degree climbing angle
- 500 lbs. capacity
- Serrated tread
- Gray powder coat finish



**Model No.
STP-1301**

Step Count: 2
Overall Dimensions (inches)
23D x 23W x 20H
Tread Size (inches)
10D x 20W
Welded
Rubber Feet
Packaging: Shrinkwrapped



**Model No.
STP-1302**

Step Count: 2
Overall Dimensions (inches)
23D x 23W x 20H
Tread Size (inches)
10D x 20W
Welded
Rubber Feet and Casters
Packaging: Shrinkwrapped



**Model No.
STP-1401**

Step Count: 3
Overall Dimensions (inches)
33D x 26W x 30H
Tread Size (inches)
10D x 22W
Unassembled
Rubber Feet
Packaging: Box



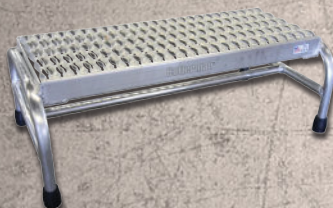
**Model No.
STP-1402**

Step Count: 3
Overall Dimensions (inches)
33D x 32W x 30H
Tread Size (inches)
10D x 28W
Unassembled
Rubber Feet
Packaging: Box

ALUMINUM STEP STANDS

Product Features:

- 45 degree climbing angle
- 500 lbs. capacity
- Serrated tread



**Model No.
STP-1801**

Step Count: 1
Overall Dimensions (inches)
16D x 31W x 10H
Tread Size (inches)
12D x 28W
Welded
Rubber Feet
Packaging: Shrinkwrapped



**Model No.
STP-1802**

Step Count: 2
Overall Dimensions (inches)
22D x 23W x 20H
Tread Size (inches)
10D x 20W
Welded
Rubber Feet
Packaging: Shrinkwrapped



**Model No.
STP-1901**

Step Count: 3
Overall Dimensions (inches)
33D x 26W x 30H
Tread Size (inches)
10D x 22W
Unassembled
Rubber Feet
Packaging: Box



**Model No.
STP-1803**

Step Count: 3
Overall Dimensions (inches)
32D x 33W x 30H
Tread Size (inches)
10D x 30W
Welded
Packaging: Shrinkwrapped
Rubber Feet

- F.O.B. Crosswell, MI; Atlanta, GA;
Bakersfield, CA; Arlington, TX

Cotterman®

www.cotterman.com • info@cotterman.com

130 Seltzer Rd.
Crosswell, MI 48422
810-679-4400 • FAX 810-679-4510
TOLL FREE 800-5-LADDER
8 A.M. – 5 P.M. MON. THRU FRI.
(EASTERN STANDARD TIME)